

VAC KING



**20V 10LITRE WET/DRY CORDLESS
VACUUM CLEANER**

MODEL NO: CVAC18V10

PART NO: 6471102

OPERATING & MAINTENANCE INSTRUCTIONS

**UK
CA** | **CE**



ORIGINAL INSTRUCTIONS

DL0824 REV 1

INTRODUCTION

Thank you for selecting this Vac King 20 Volt Vacuum Cleaner, which will provide you with a clean and safe working environment.

Before attempting to operate the machine, it is essential that you read this manual thoroughly and carefully follow all instructions given. In doing so you will ensure the safety of yourself and that of others around you, and you can also look forward to the machine giving you long and satisfactory service.

SPECIFICATION

MODEL	CVAC18V10
Part No	6471102
Weight	3.85 kg
Dimensions (D x W x H)	300mm x 420mm x 300mm
Drum Capacity	10 Litres
Water Capacity	4.5 Litres
Dust Capacity	8 Litres
Hose Dimensions (Length x Diameter)	Approx. 400mm - 1500mm x 38.1mm
Max Airflow	1.2 m ³ /min
Duty Cycle	S1 (continuous)
Battery Charger Power Supply	230 V/50Hz/1ph
Battery Voltage	20V
Battery Charging Time	Approx. 100 mins.
Discharge (Usage) Time	Approx. 20 mins
Motor Rated Input	180W
Vacuum IP Rating	IPX4
Operating Temperature	0 - 30°C

Please note that the details and specifications contained herein, are correct at the time of going to print. However, CLARKE International reserve the right to change specifications at any time without prior notice.

SAFETY PRECAUTIONS

GENERAL SAFETY

1. Prior to use, all users should become familiar with this instruction booklet.
2. This cleaner can be used by children aged from 8 years and above and persons with reduced physical, sensory or mental capabilities or lack of experience and knowledge if they have been given supervision or instruction concerning the use of the cleaner in a safe way and understand the hazards involved.
3. **DO NOT** let children play with this cleaner, supervise children using or maintaining the cleaner.
4. **AVOID** operating in the presence of flammable liquids or gases. The motor may produce sparks during operation. **DO NOT** use in enclosed areas where flammable, explosive or toxic vapours are given off.
5. **ALWAYS** stay alert, watch what you are doing and use common sense when operating. **DO NOT** use the machine while you are tired or under the influence of medication, drugs or alcohol. A moment of inattention can result in personal injury.
6. **NEVER** over-reach. Keep your proper footing and balance at all times to enable better control of the machine in unexpected situations. Take extra care when cleaning stairs.
7. **DO NOT** block the cleaners openings or hinder air flow. Keep openings free of objects including dust, lint, clothing and all body parts.

GENERAL MACHINE USE AND CARE

8. **ALWAYS** maintain the cleaner with care and keep it clean for best / safest performance.
9. **NEVER** use this cleaner if any part is damaged. Have it inspected and repaired by your CLARKE dealer. **DO NOT** use if the battery or the cleaner itself, is in poor condition..
10. **ALWAYS** take care when a long hose is required in the work area as it presents a trip hazard. Tidy the hose away when the job is finished.
11. **NEVER** pick up burning cigarettes or other hot or smoking substances.
12. **NEVER** abuse the cleaner by standing on it.
13. **ALWAYS** transport the cleaner by lifting it by the handle.
14. When not in use, turn off by the On/Off switch on top of the cleaner and remove the battery.

15. **DO NOT** change filters or carry out any cleaning or servicing, without first removing the battery.
16. Keep the external surfaces clean. **AVOID** impact damage and **DO NOT** allow the cleaner, charger or battery to come into contact with abrasive or corrosive materials.
17. **DO NOT** use solvents, thinners or alcohol to clean the cleaner, charger or battery, as these chemicals will damage the finish. With the cleaners battery unplugged from the battery compartment, use a dry cloth to wipe over the plastic casing.
18. When not in use the cleaner and battery should be stored in a secure, dry place, out of the reach of children. **DO NOT** leave it exposed to the elements and avoid direct sunlight, direct heat, rain/moisture etc.
19. Only use parts and accessories recommended in this manual. The use of unauthorised accessories or attachments may result in personal injury or damage to the machine.
20. **DO NOT** attempt to repair or modify the cleaner charger or battery. **DO NOT** attempt any electrical repair yourself. Consult a qualified electrician or the CLARKE Service Department on 020 8988 7400.

BATTERY SAFETY

1. Only use batteries and charger supplied with the cleaner.
2. If the battery or charger are damaged in anyway, **DO NOT** attempt to repair them. They should be replaced and the damaged item should be disposed of in accordance with local regulations.
3. **DO NOT** incinerate the batteries or expose to high temperatures, as they may explode.
4. Liquid ejected from the battery may cause irritation or burns. Leaks from the battery cells can occur under extreme conditions. **DO NOT** touch any liquid that leaks from the battery. If any liquid gets on the skin, wash immediately with soap and water. If liquid gets into the eyes, flush them immediately with water for a minimum of 10 minutes and seek medical attention. wear gloves to handle the battery and dispose of immediately in accordance with local regulations.
5. Keep the battery away from all metal objects such as paper clips, coins, keys, nails or screws. Shorting the battery terminals increases the risk of fire or burns.

INVENTORY OF COMPONENTS



No	Description	No	Description
1	On/Off Switch	9	Brush Nozzle
2	Carrying Handle	10	Crevice Nozzle
3	Flexible Plastic Hose	11	Dry HEPA Filter
4.	Top Cover	12	Wet Sponge Filter
5	Tank	13	Battery Charger
6	Battery Compartment	14	4Ah Battery
7	Suction Port	15	4 x Wheels (Not Shown)
8	Triangle Nozzle		

BATTERY CHARGER ELECTRICAL CONNECTIONS



WARNING! READ THESE ELECTRICAL SAFETY INSTRUCTIONS THOROUGHLY BEFORE CONNECTING THE CHARGER TO THE MAINS SUPPLY.

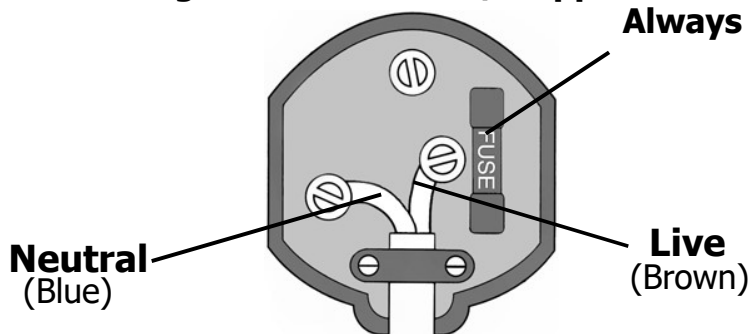
Before switching the battery charger on, make sure that the voltage of your electricity supply is the same as that indicated on the rating plate. This battery charger is designed to operate on 230VAC 50Hz. Connecting it to any other power source may cause damage.

This battery charger may be fitted with a non-rewireable plug. If it is necessary to change the fuse in the plug, the fuse cover must be refitted. If the fuse cover becomes lost or damaged, the plug must not be used until a suitable replacement is obtained.

If the plug has to be changed because it is not suitable for your socket, or due to damage, it should be cut off and a replacement fitted, following the wiring instructions shown below. The old plug must be disposed of safely, as insertion into a mains socket could cause an electrical hazard.

Plug must be BS1363/A approved.

Always fit a 3 Amp fuse



Ensure that the outer sheath of the cable is firmly held by the clamp

If in any doubt, consult a qualified electrician. **DO NOT** attempt any repairs yourself.

ENVIRONMENTAL PROTECTION



Li-ion

By purchasing this product, the customer is taking on the obligation to deal with its safe disposal in accordance with the Waste Electrical and Electronic Equipment regulations (WEEE).

In effect, this means that this cleaner, charger and battery must not be disposed of with general household waste. It must be disposed of according to the laws governing Waste Electrical and Electronic Equipment (WEEE) at a recognised disposal facility.

PREPARATION FOR USE



WARNING: BEFORE USING THE VACUUM CLEANER, MAKE SURE THAT YOU HAVE READ AND UNDERSTOOD THE SAFETY INSTRUCTIONS

UNPACKING & ASSEMBLY

With the vacuum cleaner removed from the packaging, remove the components from within the tank. Lay them out and check for shortages and that no damage was suffered in transit.

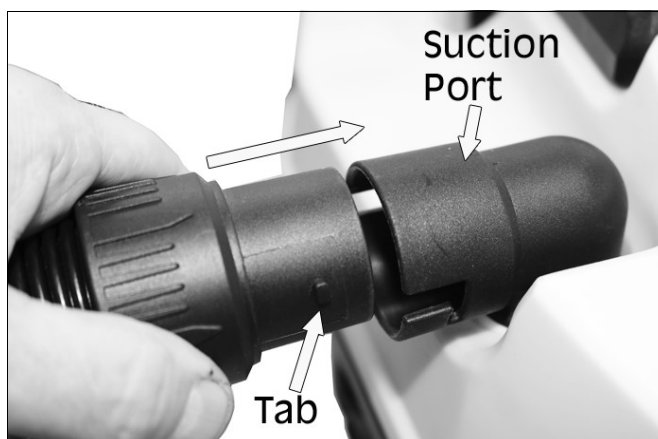
FITTING THE WHEELS

1. Press the 4 wheels into the detachable base positions as shown.

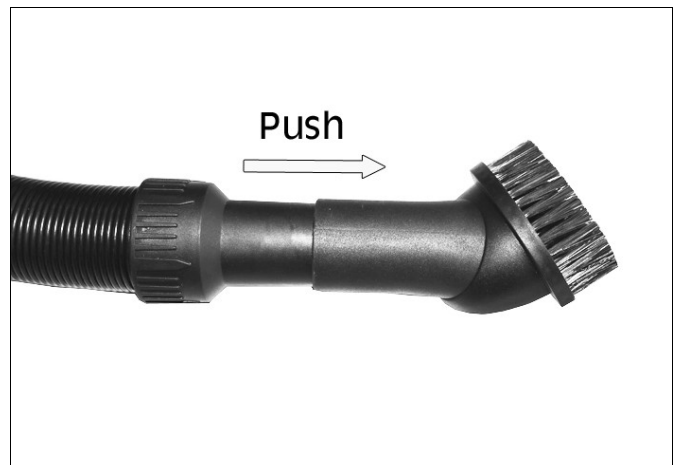


ASSEMBLING THE HOSE

1. Push the plastic hose end into the suction port, making sure the 2 tabs on the hose end align with the grooves in the suction port.
2. Twist the hose clockwise to lock in place.



3. Insert the plastic hose into the required brush/nozzle and push in until it is a tight fit, brush nozzle shown

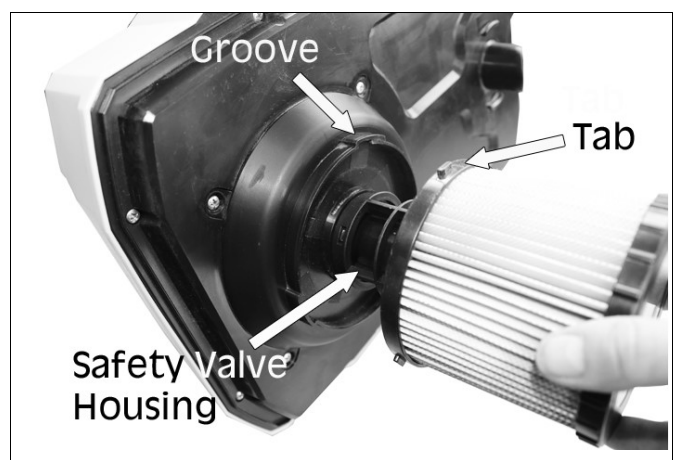


FITTING/CHANGING THE FILTERS

Filters are essential to ensure that dust or foreign matter does not enter the motor compartment which would reduce motor efficiency and eventually cause serious damage.

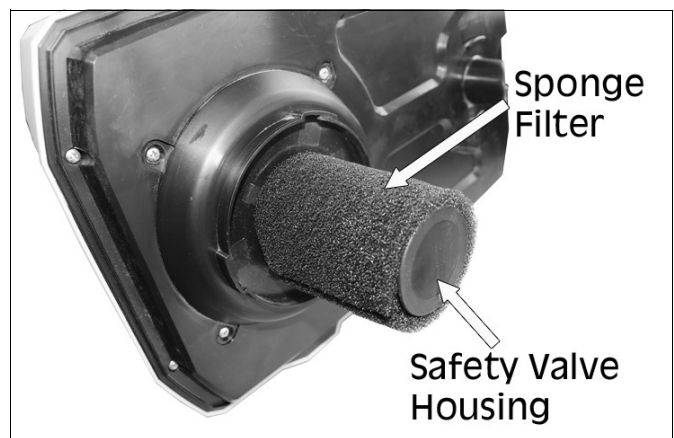
HEPA FILTER FOR DRY CLEANING

1. Fit the HEPA filter over the top of the safety flotation valve housing, as shown.
2. Line up the 3 tabs on the filter with the 3 grooves in the motor unit and turn the filter clockwise to lock in place.



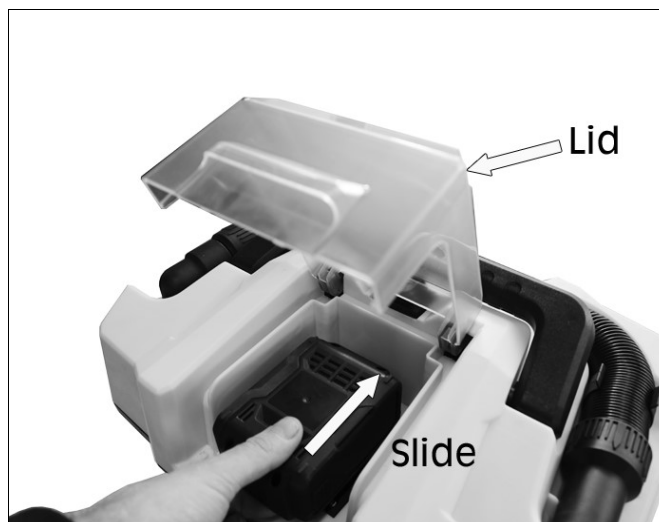
SPONGE FILTER FOR WET CLEANING

1. Place the sponge filter over the safety flotation valve housing, making sure it covers the whole housing, as shown.



BATTERY INSTALLATION

1. Lift the battery compartment lid.
2. Slide the battery into the compartment, with the release clip on the outside.
3. Before use, make sure the compartment lid is firmly clipped down in place.



4. To check how much power is in the battery, press the power indicator button on the end of the battery. The following lights will indicate how much power is in the battery.
 - 1 Light: 33% power
 - 2 Lights: 66% power
 - 3 Lights: 100% power



OPERATION

SUCTION

1. Before operating the cleaner, make sure that the appropriate filter is fitted correctly (see page 8) for the job in hand, as follows:
 - Dry Vacuum Cleaning, use the HEPA filter.
 - Wet Vacuum Cleaning, use the sponge filter.
 - Mixture of material and liquid, use both filters, fitting the sponge filter first then the HEPA filter over the top.
2. Choose the appropriate brush/nozzle and fit to the end of the plastic tube (see page 8)

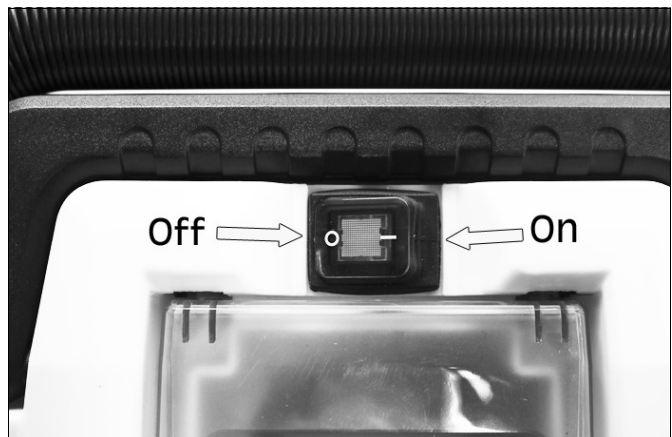
3. Make sure the hose is fixed to the suction port (see page 7)
4. Make sure that the motor housing is seated on top of the tank and the clips are locked in place, one on each side.



5. Switch on and start work.

NOTE: The machine should be positioned on a firm, level surface, specially when using for wet cleaning.

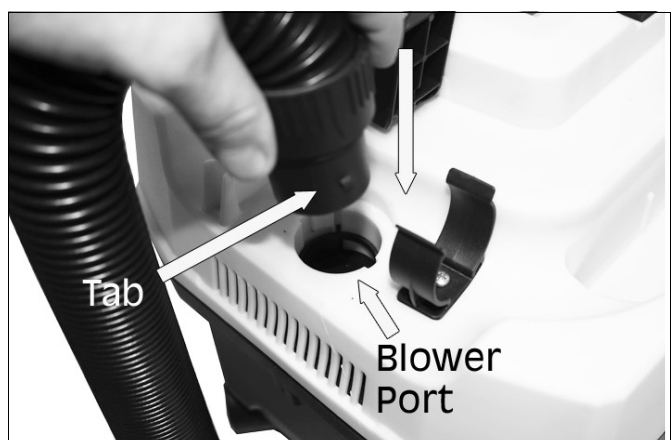
NOTE: The tank will hold approximately 4.5 litres of liquid before the safety flotation valve shuts off the vacuum flow. This can be recognised by a change in the noise of the motor. Once this happens, switch off the cleaner and empty the tank of all liquid.



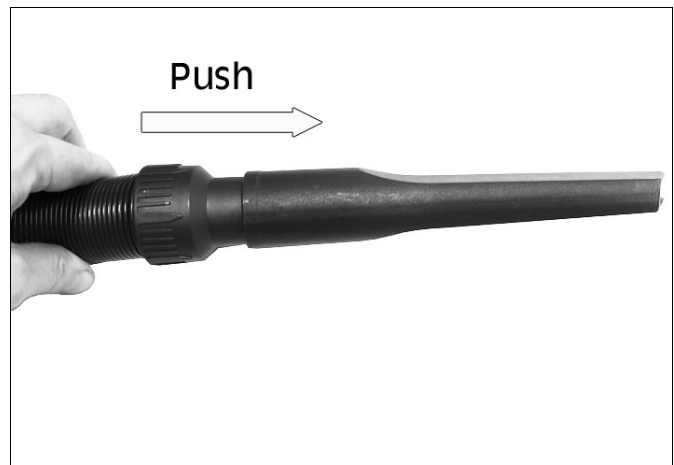
BLOWER

This vacuum has a blower function, as follows:

1. Remove the plastic hose end from the suction port.
2. Push the plastic hose end into the blower port, making sure the 2 tabs on the hose end align with the grooves in the blower port.
3. Push down and twist the hose clockwise to lock in place.



4. Insert the plastic hose into the crevice nozzle and push in until it is a tight fit, this will give you a stronger airflow.
5. Switch on and start work.



TROUBLESHOOTING

Symptom	Possible Cause	Corrective action
Suction weakens	Clogged filter	Clean dirt from filter. If condition continues, change filter.
	Air leak	Check the connection of all the accessories(hose,brush/nozzle, etc). Check that clips are fastened properly.
	Obstruction in hose or brush/nozzle	Check hose and brush/nozzle for obstructions and remove if present.
	Saturated filter	Replace saturated filter.
Dust leakage	Filter is not fitted well	Check if the filter is fitted in the right position.
Machine doesn't work	Battery is not well charged	Check if there is any power left in the battery; or charge battery.
	Motor breakdown	Take the cleaner to your CLARKE dealer for repair.

MAINTENANCE



WARNING: TAKE OUT THE BATTERY BEFORE DOING ANY MAINTENANCE WORK. IF PROPER CARE IS TAKEN TO MAINTAIN YOUR CLEANER, MOTOR MAINTENANCE IS UNNECESSARY.

CLEANING YOUR FILTERS

1. Take the filter off the machine (see pages 8)
2. Wash the filters with water only, at 40°C max.
3. When washing the filters, be gentle and avoid brushing them, as this may damage them.
4. Dry the filters for at least 24 hours before reusing them.

CLEANING YOUR ACCESSORIES

1. Wash the hose, tube and brush/nozzles regularly to reduce build up of dirt, using water at a 40°C max.
2. Shake the water off from inside, and make sure that they dry for 24 hours before reuse.

CLEANING THE TANK

1. Clean out any liquid from inside the tank.
2. Wipe down the inside with a duster cloth.

GUARANTEE

This CLARKE product is guaranteed against faulty manufacture for a period of 12 months from the date of purchase. Please keep your receipt as proof of purchase.

This guarantee is invalid if the product is found to have been abused or tampered with in any way, or not used for its intended purpose.

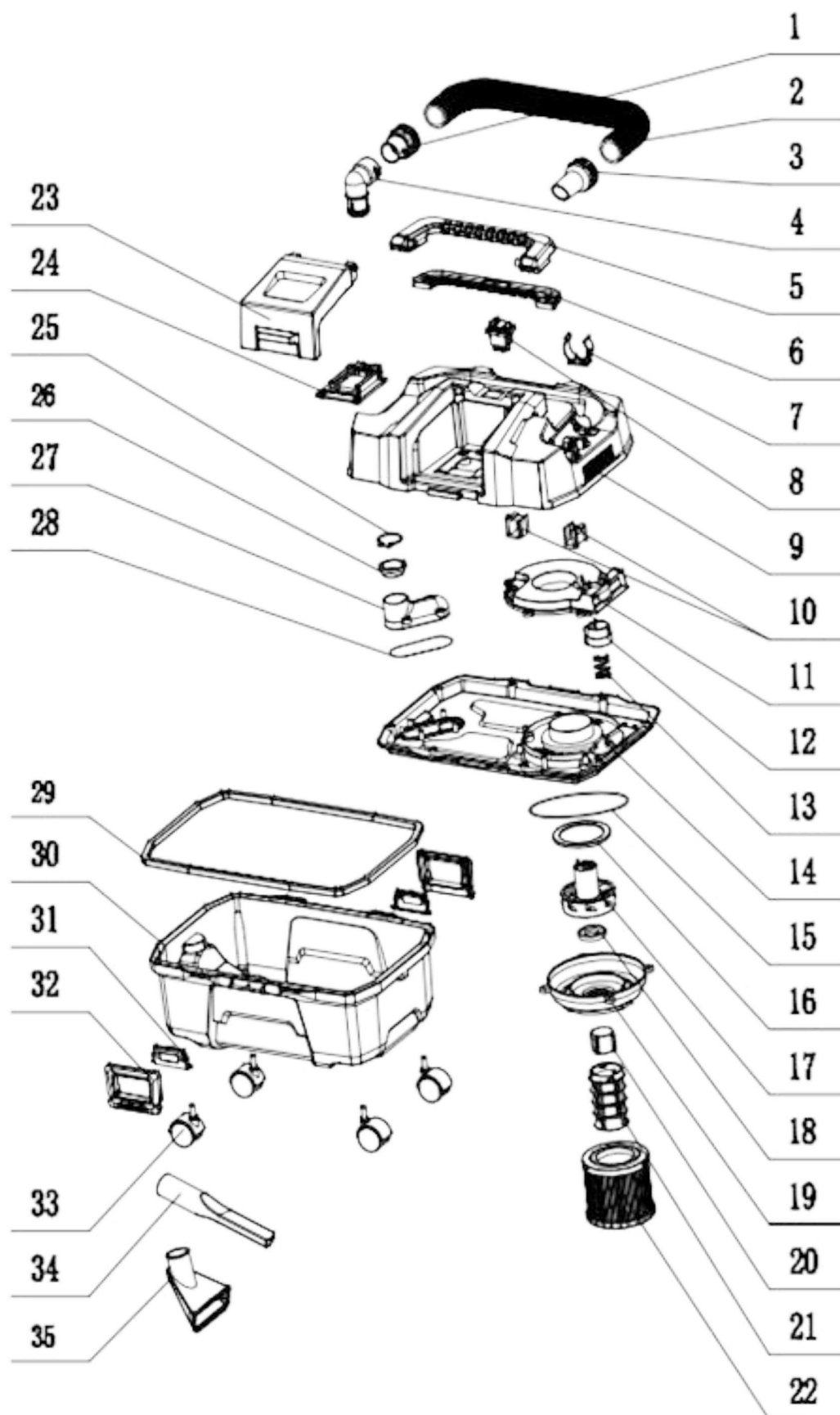
Faulty goods should be returned to their place of purchase, no product can be returned to us without prior permission.

This guarantee does not effect your statutory rights.component parts list

COMPONENT PARTS LIST

1	Suction Mouth Connector	19	Motor Base
2	Telescopic Flexible Hose	20	Safety Flotation Valve
3	Hose Connector	21	Flotation Valve Housing
4	Suction Connector	22	HEPA Filter
5	Handle	23	Battery Cover
6	Handle Cover	24	Battery Seat
7	Hose Clamp	25	Black Ring
8	On/Off Switch	26	Connector Seal Ring
9	Top Cover	27	Connector Tube
10	Left & Right Block	28	Connector Sealing Strip
11	Motor Cover	29	Barrel Sealing Strip
12	Blower Controller	30	Barrel
13	Blower Spring	31	Buckle Seat
14	Barrel Cap	32	Buckle
15	Rubber Sealing Strip	33	Wheels
16	Motor Upper Seal Ring	34	Crevice Nozzle
17	Motor	35	Triangle Nozzle
18	Motor Lower Seal Ring		

COMPONENT PARTS



A SELECTION FROM THE VAST RANGE OF

Clarke®

QUALITY PRODUCTS



AIR COMPRESSORS
From DIY to industrial, Plus air tools, spray guns and accessories.

GENERATORS
Prime duty or emergency standby for business, home and leisure.

POWER WASHERS
Hot and cold, electric and engine driven - we have what you need

WELDERS
Mig, Arc, Tig and Spot. From DIY to auto/industrial.

METALWORKING
Drills, grinders and saws for DIY and professional use.

WOODWORKING
Saws, sanders, lathes, mortisers and dust extraction.

HYDRAULICS
Cranes, body repair kits, transmission jacks for all types of workshop use.

WATER PUMPS
Submersible, electric and engine driven for DIY, agriculture and industry.

POWERTOOLS
Angle grinders, cordless drill sets, saws and sanders.

STARTERS/CHARGERS
All sizes for car and commercial use.



PARTS & SERVICE:

0208 988 7400

Parts Enquiries
Parts@clarkeinternational.com

Servicing & Technical Enquiries
Service@clarkeinternational.com

SALES: UK 01992 565333 or Export 00 44 (0)1992 565335

Clarke® INTERNATIONAL Hemnall Street, Epping, Essex CM16 4LG
www.clarkeinternational.com